

Lowest Ranked Occupations

Bottom 10 Occupations (5-Digit) in Jefferson County, AR

EMSI Q3 2015 Data Set

January 2016

Institute for Economic Advancement



2801 South University Avenue
Little Rock, Arkansas 72204

Parameters

Regions

Code	Description
5069	Jefferson County, AR

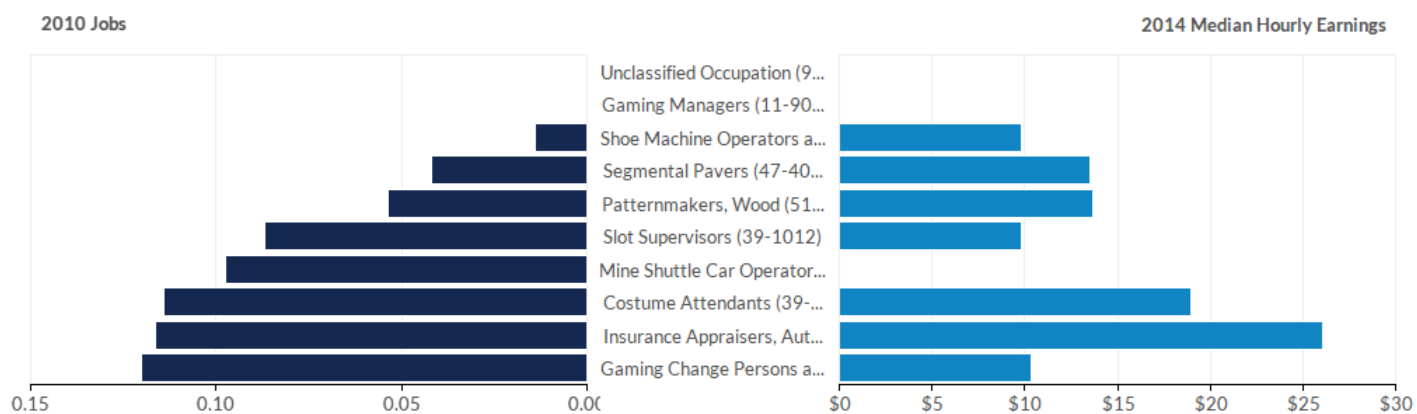
Timeframe

2010 - 2020

Datarun

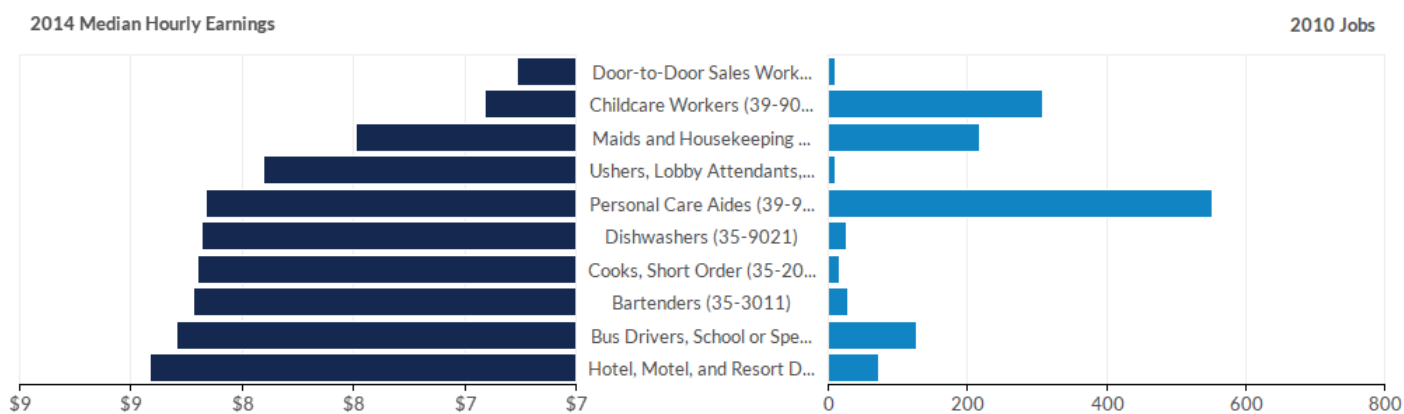
2015.3 – QCEW Employees, Non-QCEW Employees, and Self-Employed

Smallest Occupations



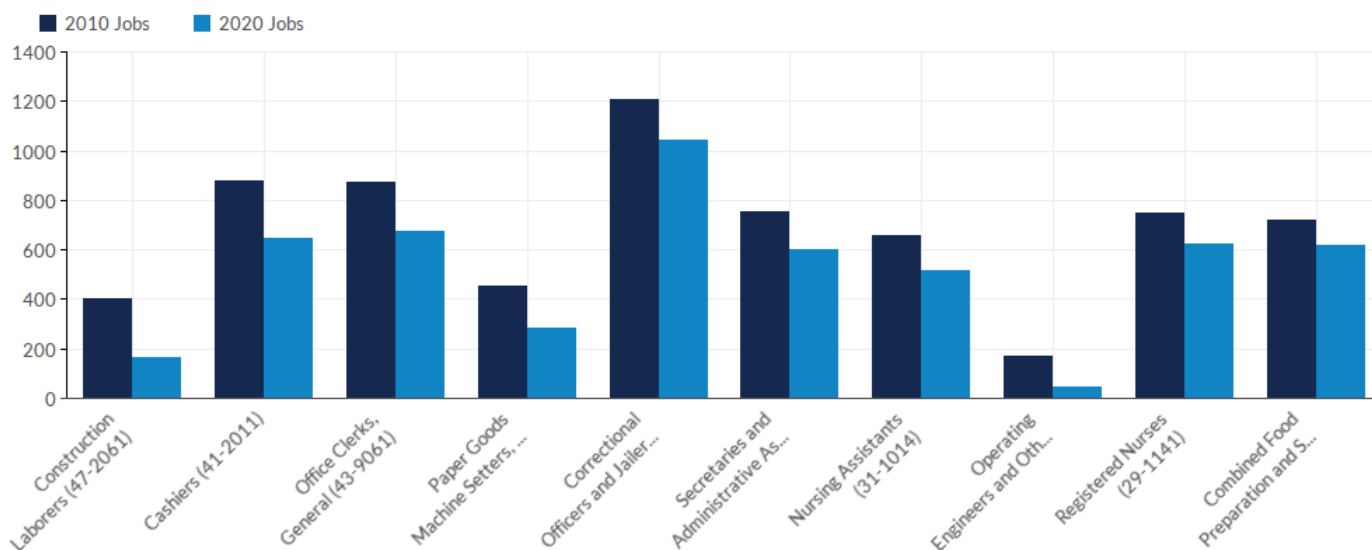
Occupation	2010 Jobs	2020 Jobs	Change in Jobs (2010-2020)	% Change	2014 Median Hourly Earnings
Unclassified Occupation	0	0	0	0%	\$0.00
Gaming Managers	0	0	0	0%	\$0.00
Shoe Machine Operators and Tenders	0	0	0	-86%	\$9.82
Segmental Pavers	0	0	0	178%	\$13.53
Patternmakers, Wood	0	0	0	7%	\$13.68
Slot Supervisors	0	0	0	52%	\$9.83
Mine Shuttle Car Operators	0	0	0	-100%	\$0.00
Costume Attendants	0	0	0	-4%	\$18.96
Insurance Appraisers, Auto Damage	0	1	1	532%	\$26.10
Gaming Change Persons and Booth Cashiers	0	0	0	-2%	\$10.32

Lowest Paying Occupations



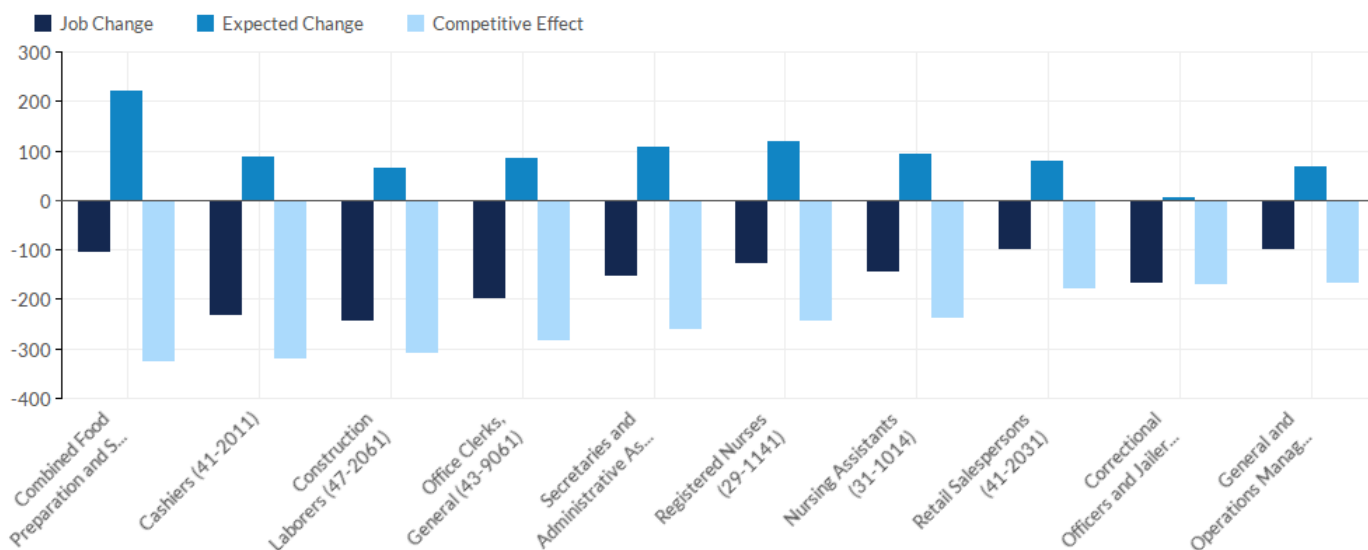
Occupation	2010 Jobs	2020 Jobs	Change in Jobs (2010-2020)	% Change	2014 Earnings Per Worker
Door-to-Door Sales Workers, News and Street Vendors, and Related Workers	11	14	3	27%	\$7
Childcare Workers	308	210	-98	-32%	\$7
Maids and Housekeeping Cleaners	218	222	4	2%	\$7
Ushers, Lobby Attendants, and Ticket Takers	10	10	0	0%	\$8
Personal Care Aides	552	704	152	28%	\$8
Dishwashers	27	19	-8	-30%	\$8
Cooks, Short Order	16	11	-5	-31%	\$8
Bartenders	28	16	-12	-43%	\$8
Bus Drivers, School or Special Client	128	110	-18	-14%	\$8
Hotel, Motel, and Resort Desk Clerks	72	53	-19	-26%	\$8

Slowest Growing Occupations



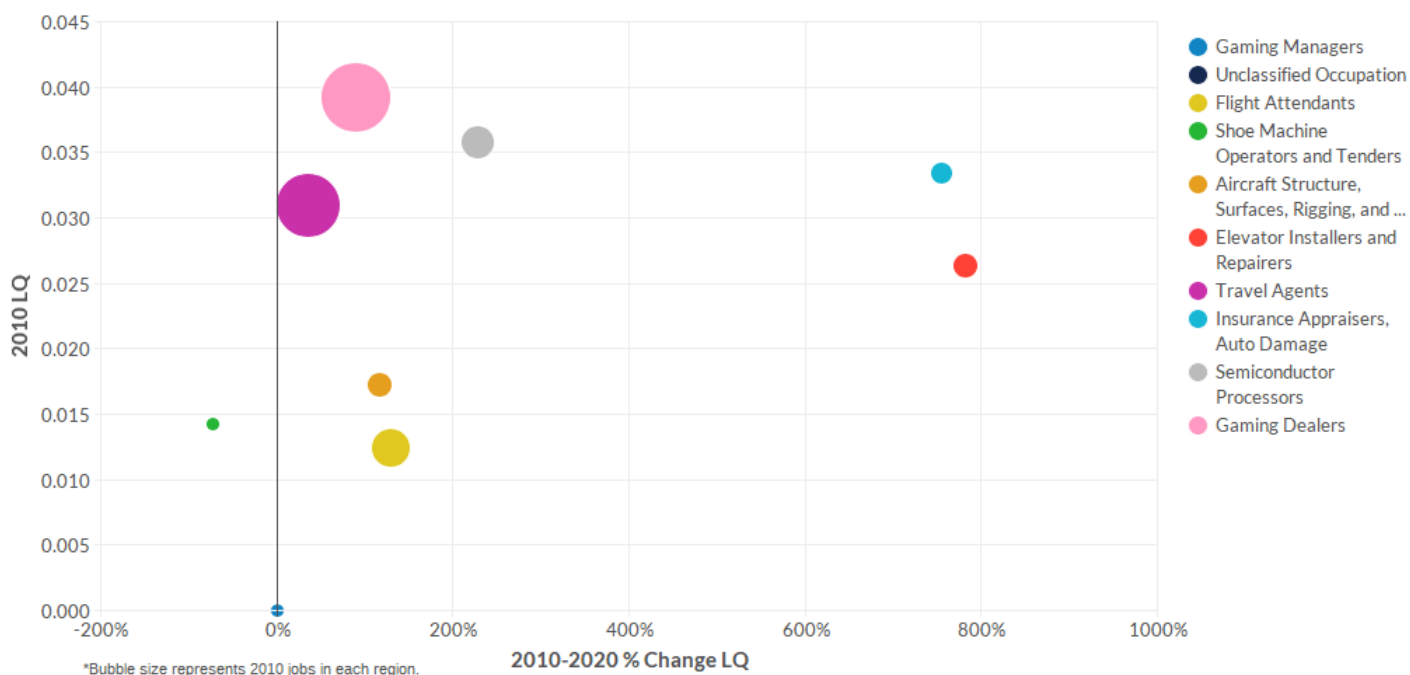
Occupation	2010 Jobs	2020 Jobs	Change in Jobs (2010-2020)	% Change	2014 Median Hourly Earnings
Construction Laborers	402	162	-241	-60%	\$11.57
Cashiers	876	646	-230	-26%	\$8.87
Office Clerks, General	873	677	-196	-22%	\$10.71
Paper Goods Machine Setters, Operators, and Tenders	454	283	-171	-38%	\$20.87
Correctional Officers and Jailers	1,208	1,044	-164	-14%	\$16.97
Secretaries and Administrative Assistants, Except Legal, Medical, and Executive	752	601	-152	-20%	\$12.04
Nursing Assistants	655	514	-142	-22%	\$11.03
Operating Engineers and Other Construction Equipment Operators	171	45	-126	-74%	\$16.81
Registered Nurses	746	621	-125	-17%	\$24.42
Combined Food Preparation and Serving Workers, Including Fast Food	721	617	-104	-14%	\$8.58

Least Competitive Occupations



Occupation	Job Change	Occ Mix Effect	Nat Growth Effect	Expected Change	Competitive Effect
Combined Food Preparation and Serving Workers, Including Fast Food	-104	124	96	220	-323
Cashiers	-230	-29	116	87	-317
Construction Laborers	-241	12	53	65	-306
Office Clerks, General	-196	-31	116	85	-281
Secretaries and Administrative Assistants, Except Legal, Medical, and Executive	-152	7	100	107	-259
Registered Nurses	-125	18	99	117	-242
Nursing Assistants	-142	6	87	93	-235
Retail Salespersons	-97	-31	111	80	-177
Correctional Officers and Jailers	-164	-156	161	5	-169
General and Operations Managers	-98	15	53	68	-166

Lowest Occupation Location Quotient



Occupation	2010 Jobs	2020 Jobs	% Change	2010 LQ	2020 LQ	% Change LQ	2014 Median Hourly Earnings
Gaming Managers	0	0	0%	0.00	0.00	0%	\$0.00
Unclassified Occupation	0	0	0%	0.00	0.00	0%	\$0.00
Flight Attendants	0	1	70%	0.01	0.03	129%	\$18.38
Shoe Machine Operators and Tenders	0	0	-86%	0.01	0.00	-73%	\$9.82
Aircraft Structure, Surfaces, Rigging, and Systems Assemblers	0	0	92%	0.02	0.04	117%	\$20.92
Elevator Installers and Repairers	0	1	660%	0.03	0.23	783%	\$34.02
Travel Agents	1	0	-15%	0.03	0.04	36%	\$12.11
Insurance Appraisers, Auto Damage	0	1	532%	0.03	0.29	755%	\$26.10
Semiconductor Processors	0	0	93%	0.04	0.12	228%	\$15.34
Gaming Dealers	1	1	56%	0.04	0.07	90%	\$10.87

Appendix A - Data Sources and Calculations

Occupation Data

EMSI occupation employment data are based on final EMSI industry data and final EMSI staffing patterns. Wage estimates are based on Occupational Employment Statistics (QCEW and Non-QCEW Employees classes of worker) and the American Community Survey (Self-Employed and Extended Proprietors). Occupational wage estimates also affected by county-level EMSI earnings by industry.

State Data Sources

This report uses state data from the following agencies: Arkansas Department of Workforce Services